



AFD-10010&20 SERIES

10 AMP and 20 AMP FILTER MODULE

FEATURES

- * Compact Size 2"x1", 2"x1.6"
- * PCB Mount
- * 10A and 20A Filter Module
- * 75VDC Input Voltage Maximum
- * Suitable for use with Half Brick And Quarter Brick Series



MODEL NUMBER	INPUT VOLTAGE	INPUT SURGE VOLTAGE	OUTPUT RATED CURRENT	DC RESISTANCE (+Vin to +Vo)	DC RESISTANCE (-Vin to -Vo)
AFD-10010-B2B	75VDC max.	100VDC max.	10A max.	11.5mΩ typ.	4.5mΩ typ.
AFD-10020-C2B	75VDC max.	100VDC max.	20A max.	9.5mΩ typ.	5.7mΩ typ.

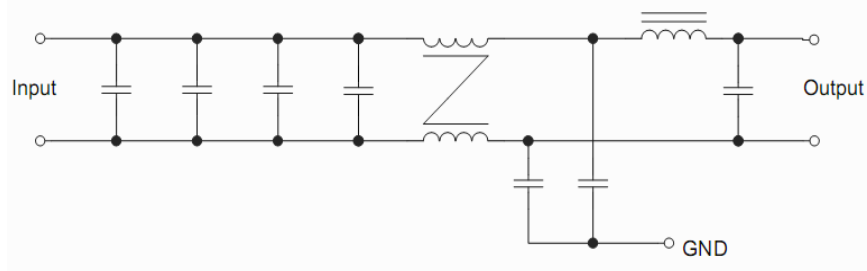


Figure1 Internal Schematic for AFD-10010-B2B Module

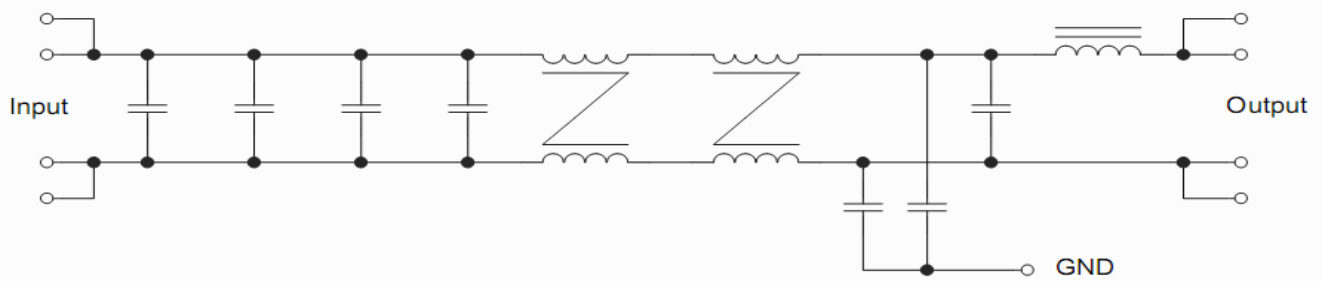


Figure2 Internal Schematic for AFD-10020-C2B Module

